



PIERRE GUERIN

UNE MARQUE DE EQUANS

PRIMO SERIES

Autoclavable fermenters & bioreactors
1L to 10L W/V



INNOVATIVE SOLUTIONS AND SUPPORT

PIERRE GUERIN BRINGS LIFE
TO YOUR BIOPROCESSES.



PRIMO SERIES FERMENTERS & BIOREACTORS

FOR YOUR BIOPROCESS RESEARCH & DEVELOPMENT



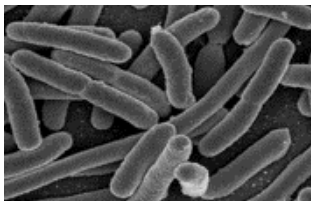
Experience & innovation

With its SIP/CIP equipment autoclavable PRIMO, PIERRE GUERIN puts at your service more than 30 years of expertise in fermentation & culture cell.

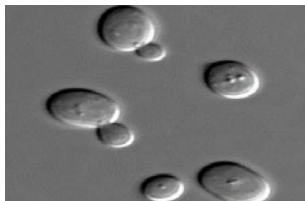
Its mobile and versatile design will be optimal for the development of all your bioprocesses.

Especially suitable for education, R&D, and start-ups, PRIMO will allow a lab-scale production in GLP or GMP environment.

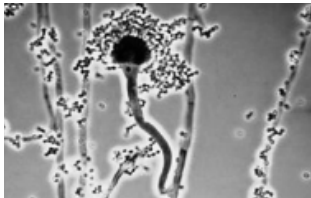
A configuration adjustable for all your type of cultures: yeast, bacteria, fungi or cell culture in batch, fed-batch, continuous or perfusion modes (with appropriate accessories).



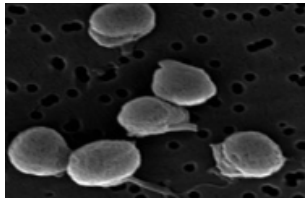
MICROBIAL CULTURE



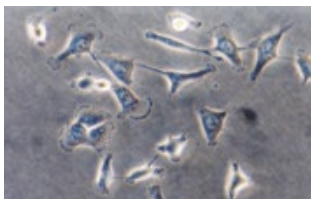
YEAST CULTURE



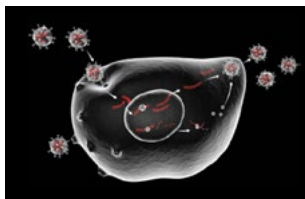
MYCELIUM CULTURE



MICRO-ALGAE CULTURE



MAMMALIAN CELL CULTURE



VIRUS AMPLIFICATION



Benefits

- > Modular, compact, and customizable design units meeting all your process requirements.
- > Industrial Micro-PLC – Touchscreen Panel PC based control technology ensuring robustness and reliability.
- > **Neptune control system** with a user friendly and intuitive interface and process optimization modules (Profile, Calculation, Strategy modules).
- > Software developed from the non-proprietary platform, **WONDERWARE InTouch**, complying with GLP / GMP pharmaceutical industry requirements (21 CFR PART 11 and GAMP5).
- > Remote supervision and maintenance of multiple bioreactors via **ETHERNET™** network.
- > Optimized design (side opening & component accessibility) for easy maintenance or later upgrade.

Quality program & qualification support

- > Rigorous quality program including comprehensive tests for an immediate start.
- > On request optional extended test program and documentation package (FS, HDS, SDS, FAT / SAT protocols) designed to support and ease qualification in a GMP environment.



PRIMO SERIES FERMENTERS & BIOREACTORS

TECHNICAL SPECIFICATIONS



Vessel, agitation & accessories

- > Vessel fitted with removable head plate & carrying handles.
- > Material and finish: borosilicate glass vessel, EN 14404 (316L) Ra ≤ 0.8µm stainless steel head plate.
- > Agitator fitted with removable & adjustable impellers dedicated to fermentation or cell culture – Adjustable speed from 40 to 1800 RPM (depending on vessel size and on the application) – Two baffles welded on an internal coil for higher oxygen and mass transfer rate.
- > Standard nozzles: 6.3 mm or 12.0mm.
- > Thermowell for temperature probe.
- > Gas inlet with 0,2 µm filter, aeration tube (microbial culture) or mesh sparger (cell culture).
- > Gas outlet with 0,2 µm filter.
- > Inoculation tube for sterile addition.
- > Harvest device.
- > Triple inlet port fitting for reagent additions (alkali, acid, antifoam, ...).

Customer information

Company	
Name	
Tel	
Email	

Please complete the "Qty" column in the equipment configuration tables as following:

	Ex:
For the main selected configuration, check the box	X
Or indicate a quantity if necessary	2
For an item to be proposed in option	Opt

Equipment configuration

	Qty
PRIMO equipment in simple version (1 vessel per module)	
PRIMO equipment in double version (2 vessels per module)	
Other configuration (ex: quadruple version) on demand	
Comments:	

Code	Nominal working volume (L)	Minimum working volume (L)	Total volume (L)	Total height (mm)	Total diameter (mm)	Qty
A1	1,0	0,4	1,5	426	250	
A2	2,0	0,5	2,6	471	250	
A3	3,0	0,9	4,5	612	317	
A5	5,0	1,1	6,5	685	317	
A10	10,0	3,0	12,4	754	343	
AX	Custom size or custom ratio on demand					

Code	Agitation	Qty
C	Impellers for cell culture (2 HTPG2.1)	
F	Impellers for microbial culture (1 HTPG2.1, 1 Rushton)	
02	A Mechanical coupling with single seal	
	B Magnetic coupling with synchronous drive	

Code	Temperature control	Qty
01	A Single wall vessel (with internal coil)	
	B Jacketed vessel	
50	A Electrical blanket – heating mod only (only compatible with 01A)	
	B Electrical blanket & cooling with cold water circulation via the internal coil (only compatible with 01A)	
	C Heating & cooling temperature module by cold / warmed water circulation via the internal coil (compatible with 01A) or the jacket (compatible with 01B)	
51	Chiller for chilled water circulation in closed loop (compatible with 06 and/or 50B or 50B)	

Code	Accessories	Qty
03	A Low flow sparger (simple-hole) for fermentation	
	B High flow sparger (multi-holes) for fermentation	
	C 50µm microporous / mesh sparger for cell culture (other porosity on demand)	
04	Flask holder + 2 flasks (max 2 holders / vessel)	
05	3-way sterile sample device	
06	Exhaust gas condenser	
07	Septum port (for needles inoculation/addition)	

Code	Instrumentation	Qty
10	Temperature measurement and control	Incl.
11	Agitation speed control	Incl.
12	pH measurement and control*	
13	pO ₂ measurement and control* (by optical probe)	
14	Foam level detection and control*	
15	Vessel weight measurement (by scale)	
16	A Total cell density measurement (by optical density)	
	B Viable cell density measurement (by capacitance)	
17	O ₂ / CO ₂ exhaust gas analyzer	
18	pCO ₂ measurement and control*	
19	Nutrient weight measurement (by scale)	

*: Excluding pump, flask, gases instrumentation, ...

Specific features, instrumentation, or references on demand.



PRIMO SERIES FERMENTERS & BIOREACTORS

TECHNICAL SPECIFICATIONS



Gas configuration

- > Control module can include a maximum of:
 - 4 rotameters (float flowmeters; manual control)
 - 4 mass flowmeters (automatic measurement & control) dedicated to 1 vessel or distributed across 2 vessels.
- > Each rotameter / mass flowmeter is equipped with a solenoid valve and a check valve.
- > Each rotameter / mass flowmeter is connected by choice to the headspace or the sparger of the vessel.

Code	Gases configuration	Qty
30	R Air rotameter	
	M Air mass flow controller	
31	R O ₂ rotameter	
	M O ₂ mass flow controller	
32	R N ₂ rotameter	
	M N ₂ mass flow controller	
33	R CO ₂ rotameter	
	M CO ₂ mass flow controller	

Pump configuration

- > Control module can manage a maximum of 10 peristaltic pumps to share between 1 or 2 vessels.

Code	Integrated peristaltic pumps (integrated on the front of the control module)	Max flow rate	Qty
40	Fixed speed pump for acid addition	3L/h*	
41	Fixed speed pump for alkali addition	3L/h*	
42	Fixed speed pump for anti-foam addition	3L/h*	
43	Additional fixed speed pump	3L/h*	
44	Additional variable speed pump	3L/h*	

Code	External peristaltic pumps (to dispose on a bench-top / table)	Max flow rate	Qty
45	A Standard variable speed pump	3L/h*	
	B High flow rate variable speed pump	10L/h*	
	C Micro flow rate variable speed pump	1L/h*	

*: Flow rate depends on tube diameter. More details in the technic quotation.

Specific rates or references available on demand.



Neptune control system

- > **Neptune** is a Supervisory Control and Data Acquisition (SCADA) Software, which runs under Microsoft WINDOWS 10 and which is compatible with **InTouch**, by WONDERWARE.
- > Micro-PLC / PC based control technology with unique 12.1 touch-screen PANEL PC Human Machine Interface.
- > Up to 24 configurable control loops for a wide range of process parameters including temperature, pH, Redox, agitation speed control, pO₂, foam level, gas flow rates, weight, cell density, O₂ / CO₂ gas analyser on gas exhaust.
- > Control types include: PID, digital on/off and others – cascade mode for advanced control strategies.
- > Compliant with **CFR21 Part 11** and **GAMP 5** requirements.
- > **Neptune** software is available in 2 versions:
 - **“Advanced”** version includes the following modules: User Access, Synoptic overview, Parameter editing, Audit Trail, Alarm, Trend, Maintenance, Strategy.
 - **“Expert”** version includes the advanced version and the following additional modules: Calculation, Profile, Data Offline, Advanced Maintenance, Flex Control.

For more information about Neptune Software and its modules, please refer to the Neptune SCADA Control Suite V5 data sheet.

Code	Hardware & software configuration	Qty
61	TA Neptune SCADA InTouch “Advanced” version	
	TE Neptune SCADA InTouch “Expert” version	
62	Additional local consulting computer with Neptune modules	
63	Additional InTouch license for remote control	

Others remote control solutions or customized architecture on demand.



Wonderware
InTouch

